

Drinking Straw Aid

**Meng-Shu Tsai (蔡孟書), Chia-Hui Hung (洪佳慧),
Tzu-Pin Weng (翁滋嬪), Chis-Ying, Chung (鍾佳穎),
Chih-Han, Chang (張芷涵)**

A Strength-Saving and One-Way Regulation of NEW DESIGN Straw

一個省力及單向調控液體的
新吸管

Patients who suffer from neuromuscular diseases, daily suctioning can be problematic

臨床上神經肌肉疾病會影響病患吸吮能力

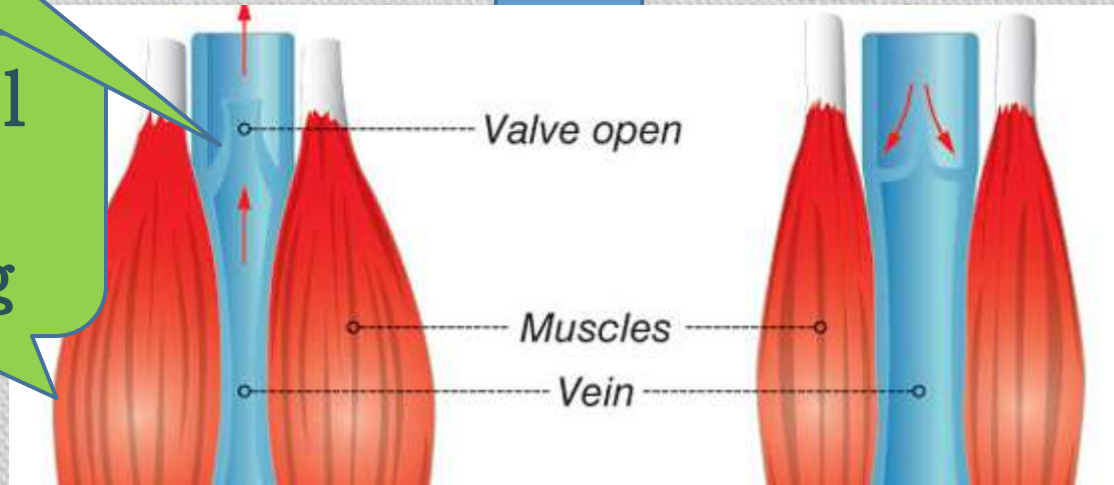
Instead, feeding by straw or sipping cup are often adopted as typical clinic practice.

臨床上改以滴管或水杯餵食，但是容易嗆到

Heart

One-Way
Valve

Skeletal
Muscle
Pumping



direct flow from the limb toward
the heart

Foot

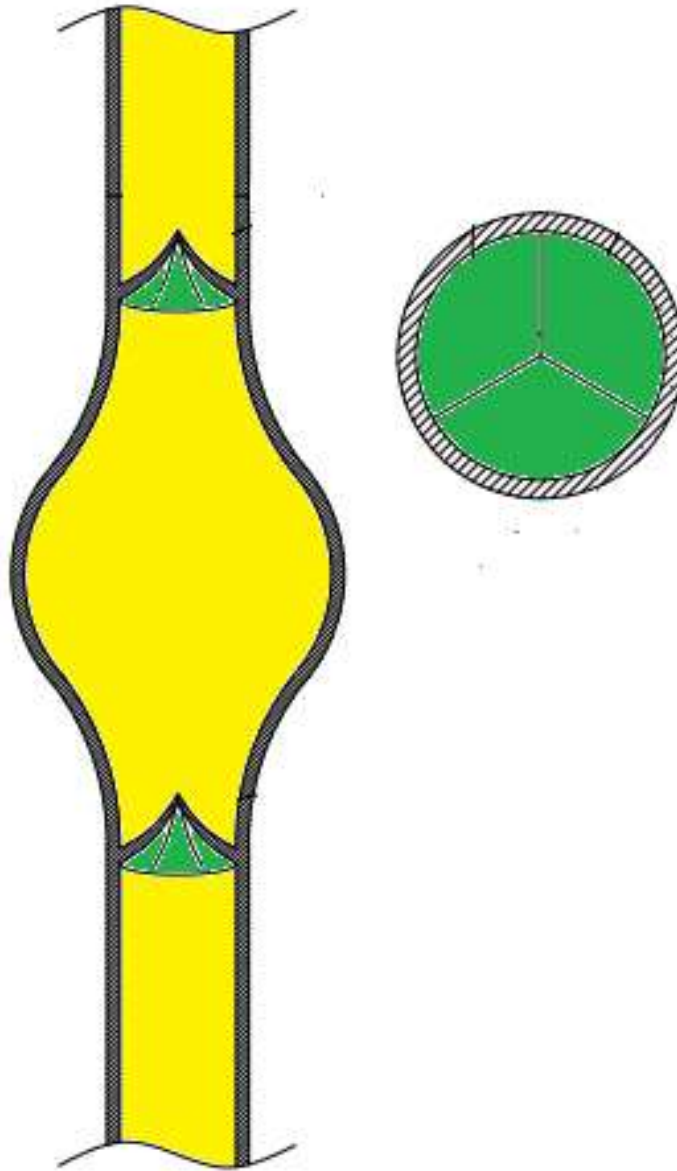
[http://www.totalbodysurgical.net/
blog/?Tag=chronic%20venous%20in
sufficiency](http://www.totalbodysurgical.net/blog/?Tag=chronic%20venous%20in sufficiency)



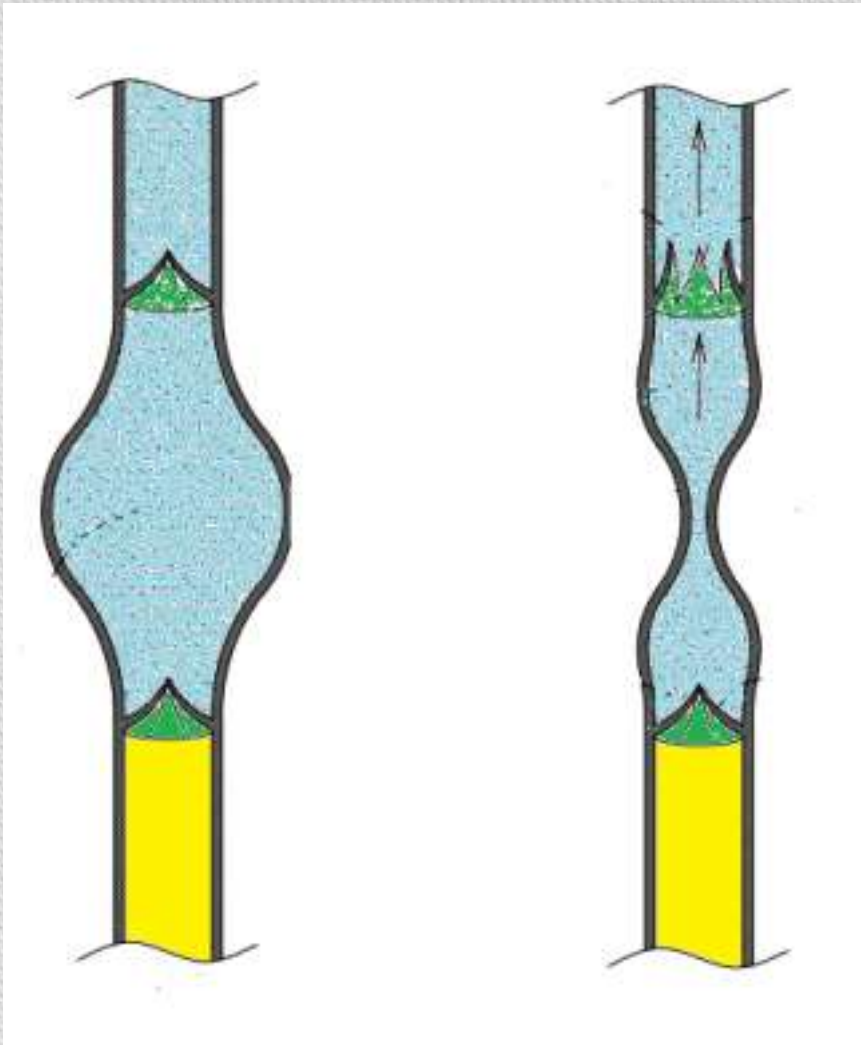
A New Design For Straw

two valves

bulge part

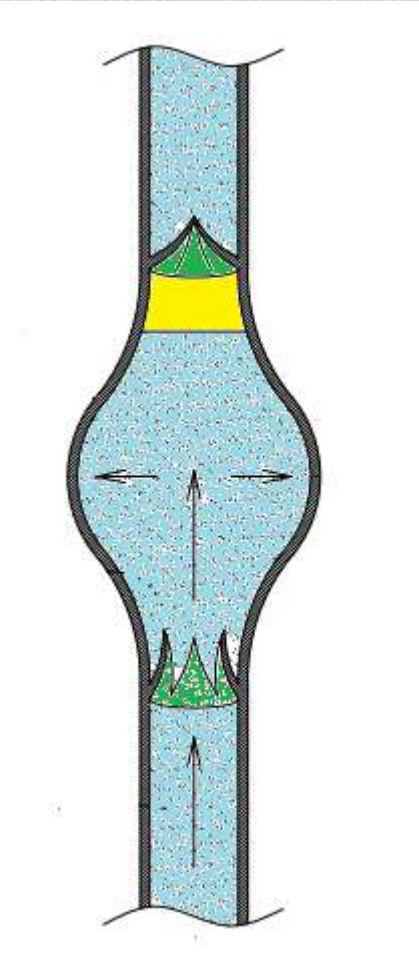


bulge part



- to provide additional manual control
提供外在壓力
- when squeezed, the pressure moves the fluid upwards
擠壓時，將液體往上運送

two valves



- direct the fluid move only in one direction

控制液體僅往單向移動

- retain the fluid in the straw without flowing back to the water cup

將液體阻斷於瓣膜上，避免液體回流至水杯

This structure is both **strength-saving** and **hygiene** can be used as the rehabilitation support for patients suffering from suction related disorder

本設計同時具有**省力**及**衛生**特點，可以提供病患復健或日常使用